

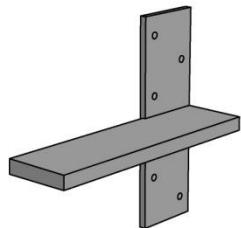
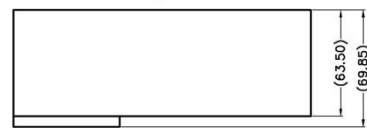
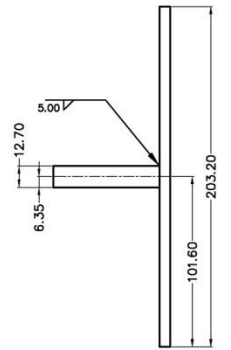
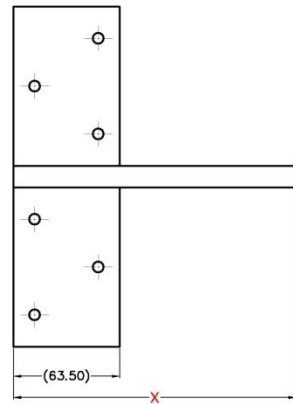
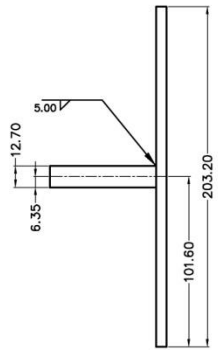
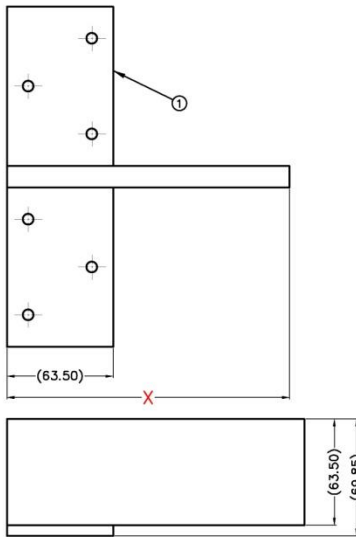
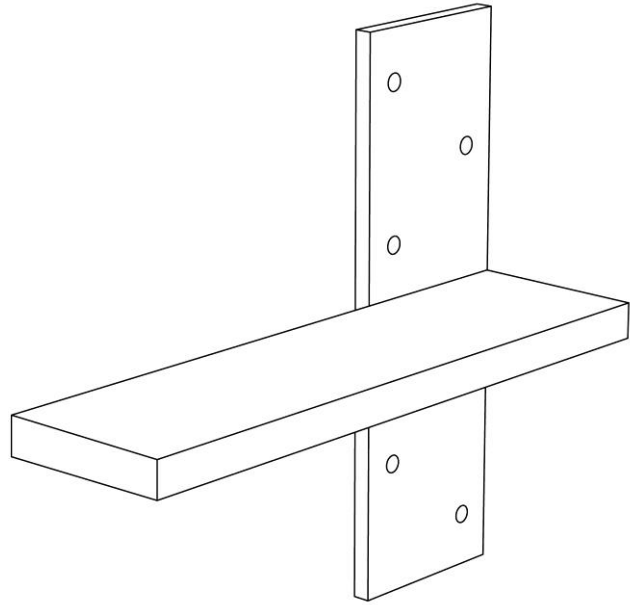


FLOATING BENCHTOP SUPPORT BRACKET

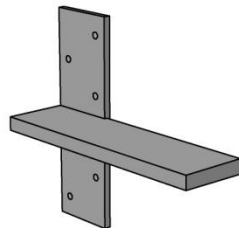


The Floating Benchtop Support Bracket is an ideal option for high quality support of benchtops, while providing a completely concealed fix, hidden bracket design. The benchtop material choice is irrelevant to these support brackets, as they are designed to carry large amounts of weight in any form of material. Our brackets are designed and made to order, to any custom length you require. All brackets have mounting plates and cut holes for fixing.

Note: Engineering and computations are incomplete at present for this bracket.



ISOMETRIC VIEW
FOR REFERENCE ONLY



ISOMETRIC VIEW
FOR REFERENCE ONLY



INSTALLATION DETAIL: FLOATING BENCHTOP SUPPORT BRACKET

1. Take clear & precise measurements on your wall and mark the appropriate mounting positions for the Floating Benchtop Support Bracket.
2. Remove section of wall or cladding in the area of the stud where the Floating Benchtop Support Bracket will be mounted.
3. Use a string line, chalk line or laser level where possible to ensure your bracket(s) remain level with each other when installation begins.
4. Fix the bracket to the side of the stud required with the appropriate fixing screws, depending on whether it is steel or timber stud / frame.
5. Upon completion of the bracket install, patch the section of wall that was removed in step 2.
6. Prior to installing the benchtop, run a coating of silicone, sealant or appropriate adhesive over the top of the bracket before placing the benchtop down.

DETAILS FOR ORDERING BRACKETS

1. When ordering, please take into consideration the measurement of the bracket will be from end to end, total length of the bracket (excluding the mounting plate, just the support section itself)
2. 75mm of the bracket will be mounted inside the wall, fixed to the stud, please ensure you make allowance for this.
3. Ensure you have the correct fixing screws, depending on your installation whether it be timber or metal stud / framing. Urban Metalwork can provide screws with your brackets if required.
4. Our recommendation for bracket length is that you allow anywhere from 50mm minimum to 100mm maximum setback from the face of the benchtop for maximum support.
5. Universal designed brackets will mount to either side of the stud effectively.